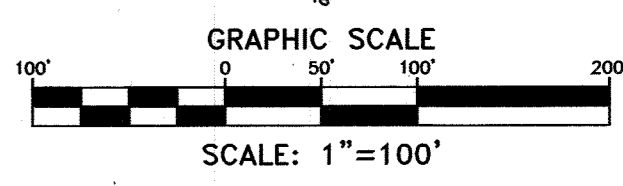
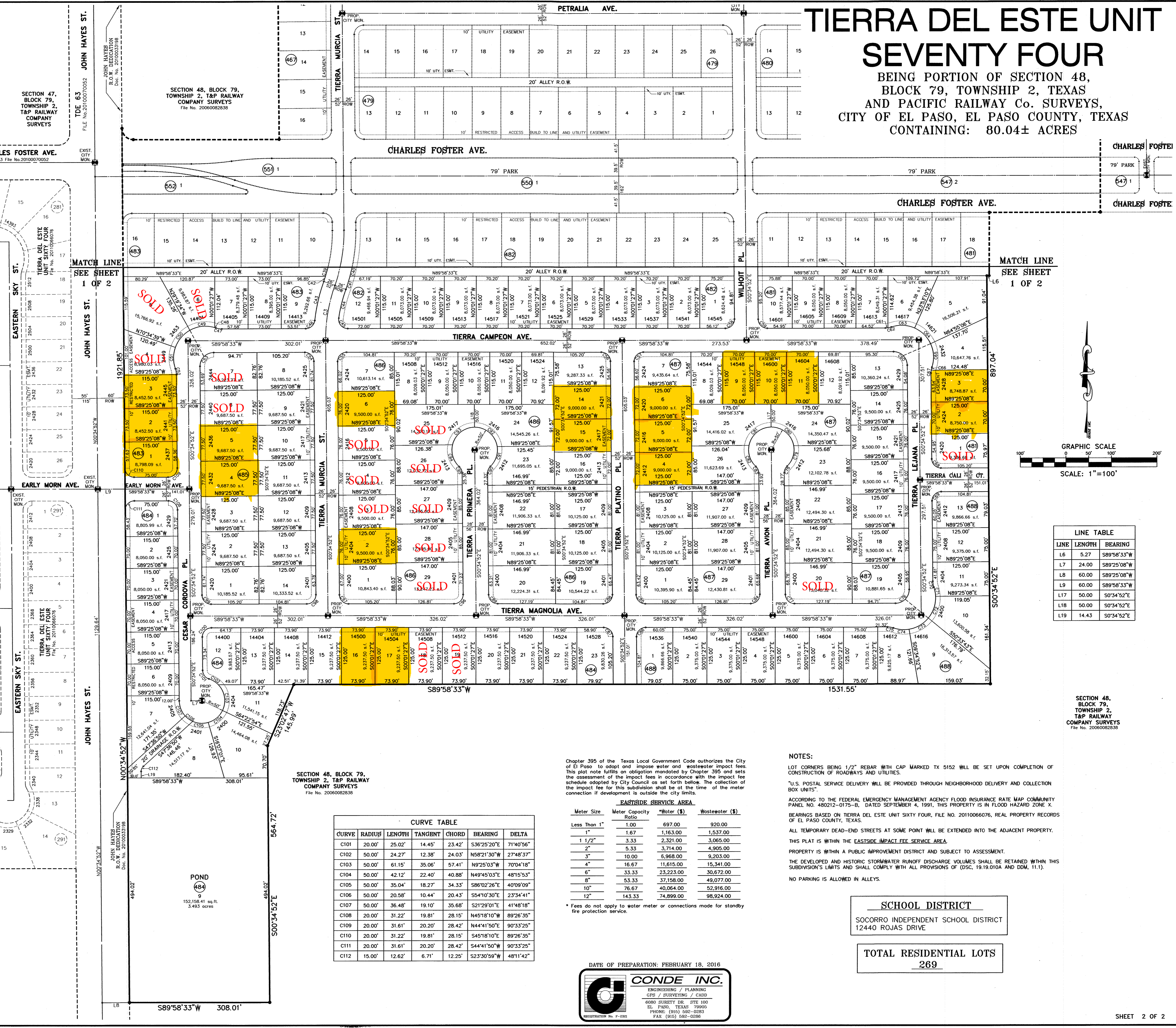
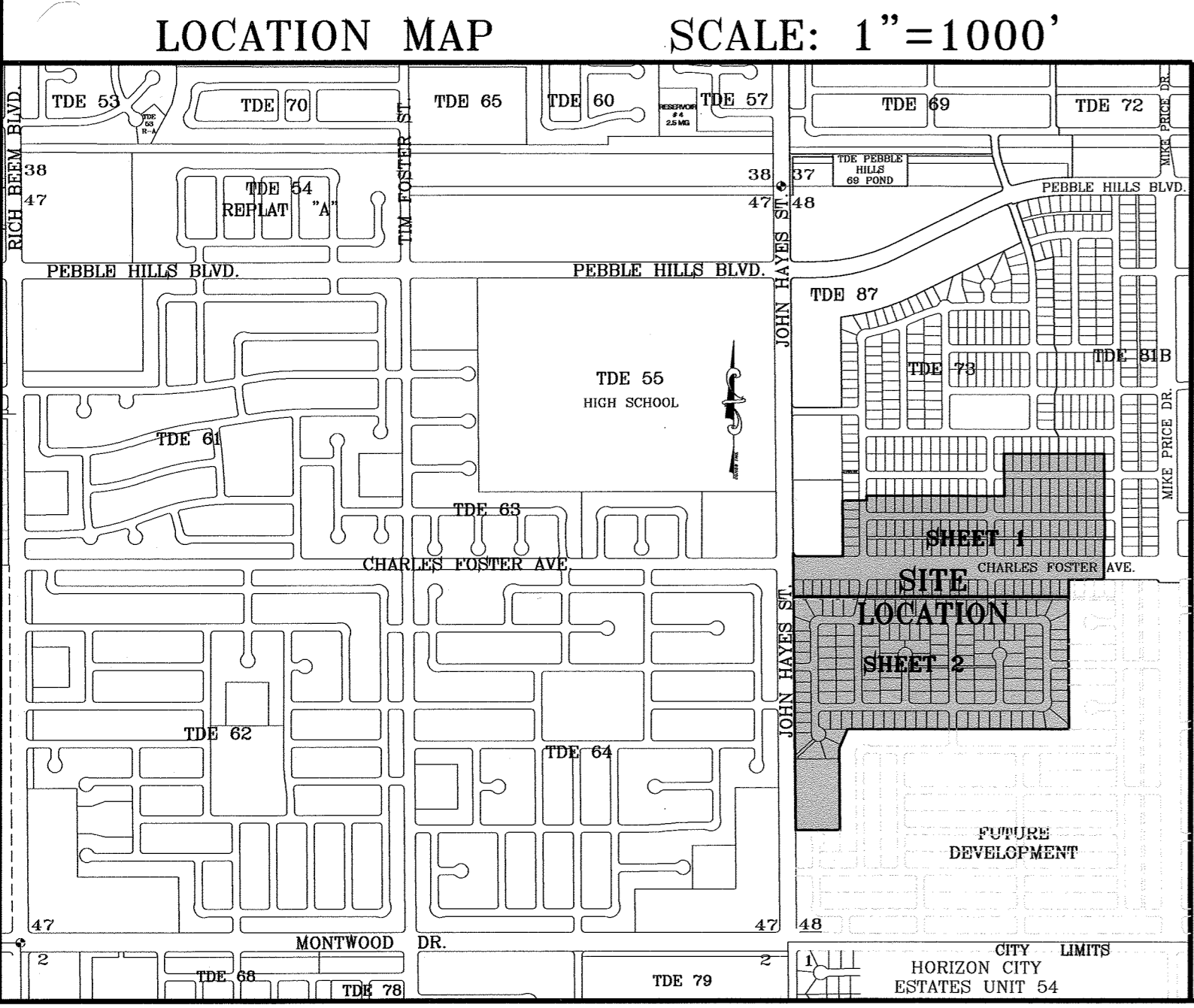


TIERRA DEL ESTE UNIT SEVENTY FOUR

BEING PORTION OF SECTION 48, BLOCK 79, TOWNSHIP 2, TEXAS AND PACIFIC RAILWAY Co. SURVEYS, CITY OF EL PASO, EL PASO COUNTY, TEXAS CONTAINING: 80.04± ACRES

CURVE	RADIUS	LENGTH	TANGENT	CHORD	BEARING	DELTA
C1	25.00'	39.03'	24.76'	35.18'	S45°18'10"E	89°26'35"
C2	350.00'	123.30'	62.30'	122.66'	N9°30'40"E	20°11'05"
C3	350.00'	123.30'	62.30'	122.66'	S9°30'40"W	20°11'05"
C39	324.00'	20.78'	10.39'	20.77'	N15°39'33"E	3°40'27"
C40	376.00'	20.57'	10.29'	20.57'	N13°26'37"E	3°08'03"
C41	376.00'	30.14'	15.08'	30.13'	N17°18'29"E	4°39'34"
C42	324.00'	11.92'	5.96'	11.92'	N18°32'59"E	2°06'28"
C43	376.00'	88.28'	44.34'	88.08'	S12°52'38"W	13°27'09"
C44	324.00'	65.44'	32.83'	65.33'	S13°49'02"W	11°34'21"
C45	20.00'	34.23'	23.03'	30.20'	S40°59'48"E	98°03'18"
C46	20.00'	29.26'	17.95'	26.72'	N48°03'48"E	83°49'29"
C47	40.00'	13.27'	6.70'	13.21'	S80°31'07"E	19°00'41"
C48	70.00'	2.51'	1.26'	2.51'	N72°02'25"W	2°03'17"
C49	70.00'	56.52'	29.80'	54.99'	S83°48'11"W	46°15'31"
C50	70.00'	50.40'	26.35'	49.32'	S40°25'53"W	41°15'05"
C51	70.00'	47.67'	24.80'	46.75'	S0°05'06"E	39°00'53"
C52	40.00'	13.27'	6.70'	13.21'	N10°05'12"W	19°00'41"
C53	70.00'	47.42'	30.29'	42.63'	S44°41'50"W	90°33'25"
C54	20.00'	31.22'	19.81'	28.15'	N45°18'10"W	89°26'35"
C55	20.00'	31.22'	19.81'	28.15'	S44°41'50"W	90°33'25"
C56	20.00'	31.22'	19.81'	28.15'	N45°18'10"W	89°26'35"
C57	20.00'	31.22'	19.81'	28.15'	S44°41'50"W	90°33'25"
C58	20.00'	31.22'	19.81'	28.15'	N45°18'10"W	89°26'35"
C59	20.00'	31.22'	19.81'	28.15'	S44°41'50"W	90°33'25"
C60	30.00'	46.83'	29.71'	42.22'	N45°18'10"W	89°26'35"
C61	40.00'	5.49'	2.75'	5.49'	N86°02'29"E	7°52'15"
C62	40.00'	7.78'	3.90'	7.77'	N76°32'06"E	11°08'25"
C63	70.00'	52.44'	27.52'	51.28'	N87°34'29"W	42°55'18"
C64	70.00'	50.13'	26.19'	49.07'	N45°35'52"W	41°01'56"
C65	70.00'	53.16'	27.94'	51.89'	N31°19'33"W	43°30'43"
C66	40.00'	6.79'	3.40'	6.78'	S13°34'08"W	9°43'21"
C67	40.00'	6.48'	3.25'	6.48'	S40°34'48"W	91°72'20"
C68	20.00'	31.22'	19.81'	28.15'	S45°18'10"E	89°26'35"
C69	20.00'	31.22'	19.81'	28.15'	S44°41'50"W	90°33'25"
C70	40.00'	13.27'	6.70'	13.21'	S10°05'12"E	19°00'41"
C71	70.00'	20.98'	10.36'	20.51'	N11°10'11"W	16°50'43"
C72	70.00'	51.94'	27.00'	50.38'	N18°20'44"E	42°11'07"
C73	70.00'	50.07'	26.16'	49.01'	N59°54'37"E	40°58'51"
C74	70.00'	34.90'	17.82'	34.54'	S85°17'49"E	28°34'05"
C75	40.00'	13.27'	6.70'	13.21'	N80°31'07"W	19°00'41"
C76	30.00'	47.42'	30.29'	42.63'	N44°41'50"E	90°33'25"
C77	20.00'	31.22'	19.81'	28.15'	S45°18'10"E	89°26'35"
C78	20.00'	16.30'	8.64'	15.86'	S22°46'23"W	46°42'29"
C79	50.00'	49.08'	26.72'	47.13'	N18°00'19"E	56°14'37"
C80	50.00'	70.22'	42.30'	64.59'	N50°20'56"W	80°27'52"
C81	50.00'	68.34'	40.71'	63.14'	S50°15'55"W	78°18'25"
C82	50.00'	50.96'	27.94'	48.79'	S18°05'19"E	58°24'04"
C83	20.00'	16.30'	8.64'	15.86'	N23°56'07"W	46°42'29"
C84	20.00'	31.22'	19.81'	28.15'	N44°41'50"E	90°33'25"
C85	20.00'	31.22'	19.81'	28.15'	S45°18'10"E	89°26'35"
C86	20.00'	31.22'	19.81'	28.15'	S44°41'50"W	90°33'25"
C87	20.00'	31.22'	19.81'	28.15'	N45°18'10"W	89°26'35"
C88	20.00'	31.22'	19.81'	28.15'	N44°41'50"E	90°33'25"
C89	20.00'	31.22'	19.81'	28.15'	S45°18'10"E	89°26'35"
C90	20.00'	16.30'	8.64'	15.86'	S22°46'23"W	46°42'29"
C91	50.00'	47.51'	25.72'	45.75'	N18°54'16"E	54°28'44"
C92	50.00'	71.79'	43.67'	65.70'	N49°26'59"W	82°15'46"
C93	50.00'	66.75'	39.41'	61.90'	S51°10'35"W	76°29'05"
C94	50.00'	52.55'	29.00'	50.17'	S17°10'39"E	60°13'24"
C95	20.00'	16.30'	8.64'	15.86'	N23°56'07"W	46°42'29"
C96	20.00'	31.22'	19.81'	28.15'	N44°41'50"E	90°33'25"
C97	20.00'	31.22'	19.81'	28.15'	S45°18'10"E	89°26'35"
C98	20.00'	31.22'	19.81'	28.15'	N44°41'50"E	90°33'25"
C99	20.00'	31.22'	19.81'	28.15'	S45°18'10"E	89°26'35"
C100	20.00'	31.22'	19.81'	28.15'	S44°41'50"W	90°33'25"



LINE	LENGTH	BEARING
L6	5.27	S89°58'33"W
L7	24.00	S89°25'08"W
L8	60.00	S89°25'08"W
L9	60.00	S89°58'33"W
L10	50.00	S0°34'52"E
L18	50.00	S0°34'52"E
L19	14.43	S0°34'52"E

CURVE	RADIUS	LENGTH	TANGENT	CHORD	BEARING	DELTA
C101	20.00'	25.02'	14.45'	23.42'	S36°25'20"E	71°40'56"
C102	50.00'	24.27'	12.38'	24.03'	N58°21'30"W	27°48'37"
C103	50.00'	61.15'	35.06'	57.41'	N9°25'03"W	70°04'18"
C104	50.00'	42.12'	22.40'	40.88'	N49°45'03"E	48°15'53"
C105	50.00'	35.04'	18.27'	34.33'	S86°02'26"E	40°09'09"
C106	50.00'	20.58'	10.44'	20.43'	S54°10'30"E	23°34'41"
C107	50.00'	36.48'	19.10'	35.68'	S21°29'01"E	41°48'18"
C108	20.00'	31.22'	19.81'	28.15'	N45°18'10"W	89°26'35"
C109	20.00'	31.22'	19.81'	28.15'	N44°41'50"E	90°33'25"
C110	20.00'	31.22'	19.81'	28.15'	S45°18'10"E	89°26'35"
C111	20.00'	31.22'	19.81'	28.15'	S44°41'50"W	90°33'25"
C112	15.00'	12.62'	6.71'	12.25'	S23°30'59"W	48°11'42"

Chapter 395 of the Texas Local Government Code authorizes the City of El Paso to adopt and impose water and wastewater impact fees. This impact fee schedule is adopted by City Council as set forth below. The collection of the impact fee for this subdivision shall be at the time of the meter connection if development is outside the city limits.

Meter Size	Meter Capacity Ratio	Water (\$)	Wastewater (\$)
Less Than 1"	1.00	697.00	920.00
1"	1.67	1,163.00	1,537.00
1 1/2"	3.33	2,321.00	3,060.00
2"	5.33	3,714.00	4,905.00
3"	9.38	6,368.00	8,203.00
4"	16.67	11,615.00	15,341.00
6"	33.33	23,223.00	30,672.00
8"	53.33	37,188.00	49,077.00
10"	76.67	40,064.00	52,916.00
12"	143.33	74,899.00	98,924.00

* Fees do not apply to water meter or connections made for standby fire protection service.

NOTES:
 LOT CORNERS BEING 1/2" REBAR WITH CAP MARKED TX 5152 WILL BE SET UPON COMPLETION OF CONSTRUCTION OF ROADWAYS AND UTILITIES.
 * U.S. POSTAL SERVICE DELIVERY WILL BE PROVIDED THROUGH NEIGHBORHOOD DELIVERY AND COLLECTION BOX UNITS.
 ACCORDING TO THE FEDERAL EMERGENCY MANAGEMENT AGENCY FLOOD INSURANCE RATE MAP COMMUNITY PANEL NO. 480212-0175-B, DATED SEPTEMBER 4, 1991, THIS PROPERTY IS IN FLOOD HAZARD ZONE X.
 BEARINGS BASED ON TIERRA DEL ESTE UNIT SIXTY FOUR, FILE NO. 2011066076, REAL PROPERTY RECORDS OF EL PASO COUNTY, TEXAS.
 ALL TEMPORARY DEAD-END STREETS AT SOME POINT WILL BE EXTENDED INTO THE ADJACENT PROPERTY.
 THIS PLAN IS WITHIN THE EASTSIDE IMPACT FEE SERVICE AREA.
 PROPERTY IS WITHIN A PUBLIC IMPROVEMENT DISTRICT AND SUBJECT TO ASSESSMENT.
 THE DEVELOPED AND HISTORIC STORMWATER RUNOFF DISCHARGE VOLUMES SHALL BE RETAINED WITHIN THIS SUBDIVISION'S LIMITS AND SHALL COMPLY WITH ALL PROVISIONS OF (D.S.C. 19.1010A AND DDM. 11.1).
 NO PARKING IS ALLOWED IN ALLEYS.

SCHOOL DISTRICT
 SOCORRO INDEPENDENT SCHOOL DISTRICT
 12440 ROJAS DRIVE

TOTAL RESIDENTIAL LOTS
 269

DATE OF PREPARATION: FEBRUARY 18, 2016

Tierra Este Unit 74	Price	Lot sf	Hm sf	Lot	Block	Front	Back	Left	Right
2424 Tierra Lejana Pl	\$65,500.00	8,750		2	481	70	70	125	125
2428 Tierra Lejana Pl	\$65,500.00	8,750		3	481	70	70	125	125
2437 Cesar Cordova	\$65,800.00	8,798		1	483	78	78	115	115
2441 Cesar Cordova	\$65,500.00	8,452		2	483	73	73	115	115
2445 Cesar Cordova	\$65,500.00	8,452		3	483	73	73	115	115
2449 Cesar Cordova	\$65,500.00	8,980		4	483	62	101	115	120
2404 Tierra Muscia	\$69,800.00	9,500		2	486	76	76	125	125
2420 Tierra Muscia	\$69,000.00	9,500		6	486	76	76	125	125
2421 Tierra Platino Pl.	\$68,000.00	9,000		14	486	72	72	125	125
2417 Tierra Platino Pl.	\$68,000.00	9,000		15	486	72	72	125	125
14500 Tierra Magnolia Ave	\$67,500.00	9,237		16	484	73	73	125	125
14502 Tierra magnolia Ave	\$67,500.00	9,237		17	484	73	73	125	125
2412 Tierra Platino Pl	\$67,500.00	9,000		4	487	72	72	125	125
2416 Tierra Platino Pl	\$67,500.00	9,000		5	487	72	72	125	125
2420 Tierra Platino Pl	\$67,500.00	9,000		6	457	72	72	125	125
14548 Tierra Campeon Ave	\$62,000.00	8,050		9	487	70	70	115	115
14600 Tierra Campeon Ave	\$62,000.00	8,050		10	487	70	70	115	115
14604 Tierra Campeon Ave	\$62,000.00	8,050		11	487	70	70	115	115